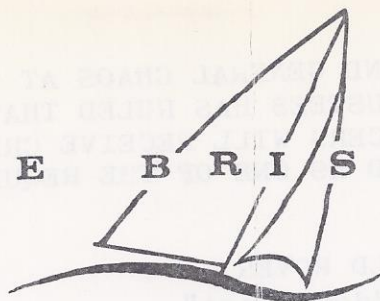




CHESAPEAKE BRISTOL CLUB



SEPTEMBER '83

Mad dogs and Bristoleers go out in the noon day sun.....

On the 20th of August Bill and Ann Sieling anchored WHIM in the vicinity of good ol' #77 and looked... and looked... for the racers! The flag went up and the horn tooted and a pale green DAPHNE, a blue EASTING DOWN, and KALANEMOS (with a somewhat underaged crew) headed down the bay. As the committee boat shipped anchor BONKERS moseyed over the start... late as usual. It was a nice reach down to Bloody Point, but the run up Eastern Bay was not to be believed! Racers and non-racers resorted to fascinating techniques to beat the heat... from buckets of bay water over the head to gypsy tents of sheets to shade the fevered brow. It was a hot race.

Pat and Cary Dickiesen had planted HI BALL's big anchor firmly in the mud and soon her pals were snuggling up alongside. TROUVAILLE, DAPHNE, and BONKERS to starboard and KALANEMOS, SAVOIR FAIRE, EASTING DOWN and SOUTHERN GIRL to port. Some distance away was TALISMAN who decided to trust only her own anchor... so Bill and Beryl Flynn came a visitin' by dinghy. As the C.B.C. (Char Broiled Crisply) folk were enjoying the attitude adjustment hour WHIM joined the raft to starboard. Poor thing! She'd been stood up by a dastardly Alberg and left to starve at Wye Landing! Bristoleers never let anyone go hungry, and the slight was soon forgotten.

Marcia Outerbridge, a real evangelist of sailboarding, discovered a quick way to teach people to stay upright on the board..... turn them loose in a river full of jellyfish! Norm Bogard tried his hand.. and feet... at the sport, and Bill Flynn hit the water a couple of timesVery briefly... and soon was scooting around like a pro. Beryl was waiting with the Adolphi Tenderizer.

After a peaceful snooze under an almost full moon and as boats began to pull out for the homeward trip, the process of readjustment brought the two four footed crew members together on adjacent boats, an exceptionally enthusiastic meeting was narrowly averted!

Here are the Wye River Race Results.... Corrected.... natch!

1.	DAPHNE	3.17.45
2.	EASTING DOWN	3.39.40
3.	KALANEMOS	3.40.19
4.	BONKERS	3.59.01

PS. Jumper, the canine crew of HI BALL, must be carefully monitored when rounding marks. It seems that she has an inherent attraction to birds and Osprey are just too hard to resist!



NEXT GATHERING - TILGHMAN CREEK
OFF THE MILES RIVER SEPTEMBER 17, 1983

INSTRUCTIONS FOR RACE/CRUISE #6 - CLEMENTS CREEK CLAMBAKE

DATE: Saturday, September 24, 1983

START LINE: (Refer to Annapolis Area Chart)

The Starting Line will be between the Committee Boat's mast and Mark "X", R"2", Buoy entrance to Annapolis Channel.

FINISH LINE:

The Finish Line will be between the Committee Boat's mast and Mark "X" unless the course is shortened by the Committee Boat being repositioned at a mark of the course. A yacht finishes from the direction of the last turning mark.

COURSE:

The course to be sailed will be designated by letters displayed on the Committee Boat. Round marks in order displayed, reading left to right. A RED placard means leave the following marks to PORT. A GREEN placard means leave the following marks to STARBOARD. For example:

RED	E	D	GRN	B	A	C
-----	---	---	-----	---	---	---

means to leave E and D to port, B, A, and C to starboard.

STARTING SIGNALS:

1120 White Flag Raised - 3 horn blasts
1124 White Flag Lowered

1125 Blue Flag Raised - 2 horn blasts
1129 Blue Flag Lowered

1130 START Red Flag Raised - 1 horn blast

NOTE: Hoisting of flags takes precedence over horn and time of day.

SPECIAL INSTRUCTIONS:

1. Review the Racing Rules in the CBC 1983 Directory.
2. State your intention to race by sailing past the stern of the Committee Boat prior to 1120 hours.
3. Fly a white signal (approx. 12" x 12") from the backstay.
4. Headsails - working jibs and genoas only. No spinnakers, staysails, drifters, flashers, etc. No foresail combinations.
5. Racers must give right-of-way to commercial shipping. Violators are subject to disqualification.
6. Yachts over the Starting Line early will be hailed by sail number and must return to restart around either end of the line. The responsibility for returning shall rest with the yacht(s) concerned.

GOOD LUCK !

*Work up an appetite for that
scrumptious seafood to come!
....and hone those sailing skills
while you're at it!*

THE GREAT "TWO-FER" CBC CLEMENT CREEK LOBSTER BAKE

SEPTEMBER 24
4:00 P.M.

DOWNS COMMUNITY CLUBHOUSE
DOWNS ON SEVERN

- * 2 LOBSTERS,
CLAMS, SHRIMP,
OYSTERS AND
BUTTER IN A
BUNDLE READY
TO STEAM AND
BE DEVoured
BY TWO!!

ONLY

\$13.00



TO STEAM YOUR
DINNER IN
AND

FOR MEMBERS
THE CLUB WILL
PROVIDE PLATES,
EATING TOOLS,
NAPKINS, WATER
TAXI, SOFT DRINKS
AND BEER!

(FOR GUESTS THERE
IS A WEE CHARGE
OF \$3.00/TWOSOME)

A SALAD, SIDE DISH OR DESSERT
(FOR AT LEAST FOUR TIMES
YOUR NUMBER)
TO SHARE WITH ALL!

BRING ALONG YOUR MALLETS, CRACKERS &
PERSONAL SEAFOOD TOOLS . . . AND A
HEARTY APPETITE!

*
IF LOBSTER DOESN'T LIKE YOU, OR IT'S A BIT RICH FOR THE
KIDS, BRING YOUR OWN GRILLABLES AND JOIN THE FUN!

SEND THIS FORM, WITH YOUR CHECK, TO: JAN FLOWER
1690 KINGSBRIDGE COURT, ANNAPOLIS, MD 21401

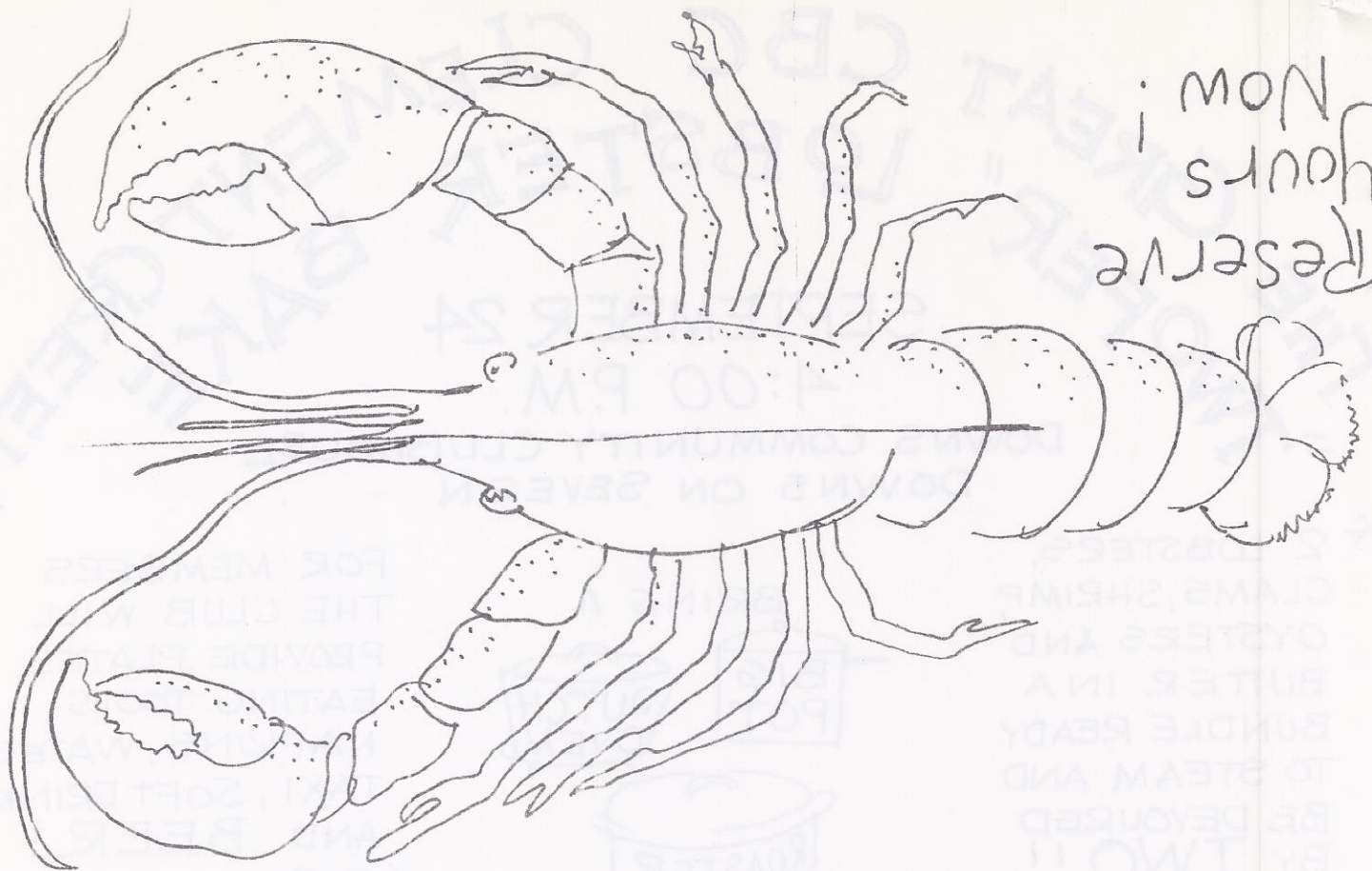
BEFORE SEPTEMBER 19

HERE IS MY CHECK MADE OUT TO CHESAPEAKE BRISTOL CLUB
FOR _____ MEMBERS AT "TWO-FER" \$13.00
AND _____ GUESTS AT "TWO-FER" \$16.00

FOR THE LOBSTER & CLAMBAKE

AT CLEMENTS CREEK - SEPTEMBER 24, 1983

MY NAME IS _____



Reserve
hours!
Now!

CHESAPEAKE BRISTOL CLUB
4011 THORNAPPLE STREET
CHEVY CHASE, MD. 20815

ANNAPOLIS AREA CHART

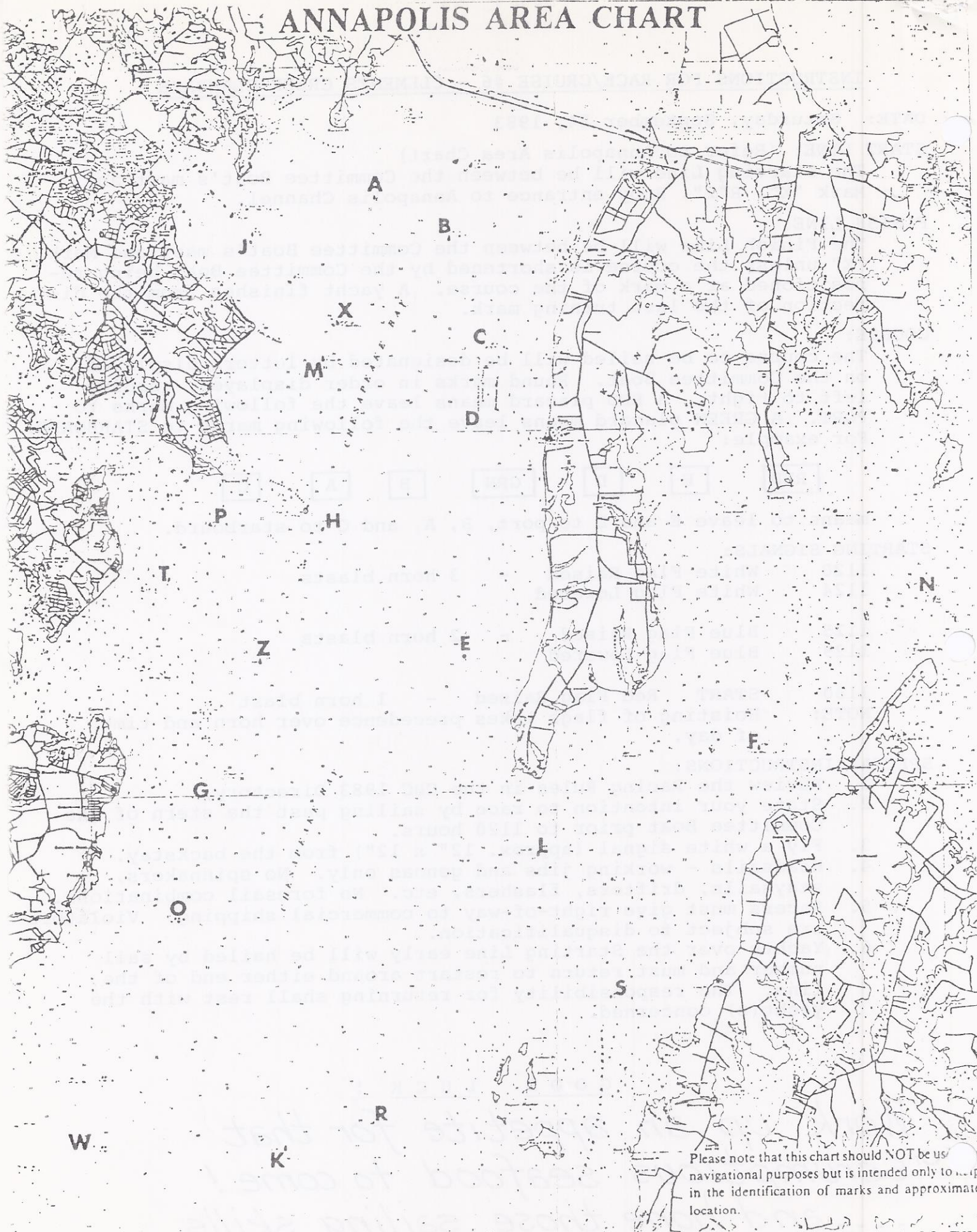


CHART 12270

DATE 10-29-77

Your chart of Annapolis Area Racing Marks is in your Blue Book!

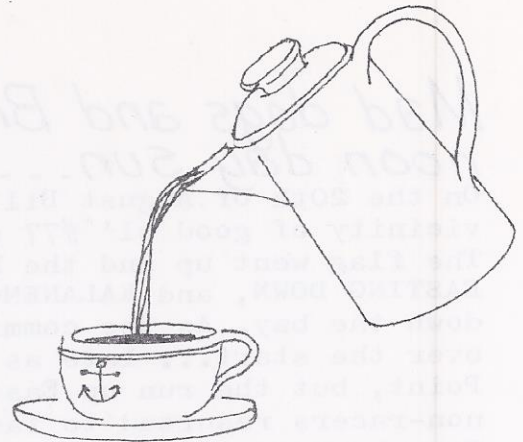
DUE TO AN AMBIGUITY AND GENERAL CHAOS AT THE END OF THE MILBUR RACE, THE BOARD OF TRUSTEES HAS RULED THAT THERE WILL BE NO ORDER OR FINISH, BUT ALL RACERS WILL RECEIVE CREDIT FOR THEIR PARTICIPATION AND IT WILL BE COUNTED AS ONE OF THE REQUIRED FOUR RACES.

We understand that WILD ROVER has spent the summer "down East" and that it has been a very busy summer for skipper Jack Keegan! Hope to see them soon, as the cold breezes will be blowin' up thataway...

POT POUREE ➡

*COMMODORE'S CUP SCOOP
IN YOUR NEXT ISSUE !!*

Bob and Nan McIntosh of QUEST have just returned from a junket to Scotland to visit the head of their clan and do a bit of touring. We missed you!



Mal and Arlene Druskin, having made every good improvement and done all manner of perfecting, have decided to put MELTEMI up for sale... so they can start all over again on another! If you are interested in a top notch fully equipped 35.5 call Mal or Arlene in the evenings at 301/ 486-8210

FROM BALTIMORE ➡

From the Baltimore Beltway go south on Rt #3. Take Rt #178 East (Generals Highway to Crownsville and Annapolis) About $\frac{1}{4}$ mile past Eisenhower Golf Course turn left onto Old Rt 178. Go $\frac{1}{4}$ mile and turn left onto Sherwood Forest Road.* Go $\frac{2}{10}$ mile and turn right onto Coach Way (there is a "Downs" sign on the corner) and go $1\frac{1}{2}$ miles. Turn left onto St. Edmonds Place, make a quick right onto Brookside Common and turn right into the parking lot.

FROM WASHINGTON ➡

From the Washington Beltway go east on Rt #50 about 18 miles to the first Annapolis exit (Rt #450/178) Bear right off exit toward Crownsville. Go $2\frac{1}{2}$ miles on 178 to "Rudy's Tavern" on the left and a Sherwood Forest Sign on the right. Turn right on Sherwood Forest Road.* (follow Baltimore directions from here on.)

HOW TO GET TO THE DOWNS COMMUNITY CLUBHOUSE

FROM THE SEVERN ➡

Clements Creek is the third creek on the western shore of the Severn River above the Route 50 bridge. (It is before you reach Round Bay) There is plenty of depth in the creek. Downs Marina is the first one on the North Side.